

Sockets IEC/EN 60 309



Wall sockets

Low version, one cable entry
- for use in places with
limited space.



Wall sockets

High version, four cable
entries - **feeding through of
cables is possible.**



Mini combinations

The **compact**, inexpensive
and **elegant solution** for AC
and DC connection.
Preferred private area of
application in garages.



Flush mounting wall sockets

of the Mondo series are suitable
for use in shopping malls,
department store fronts,
laboratories and canteens –
elegant and flat.

Available in three colours:

pearl white (PW) RAL 1013

clear white (RW) RAL 9010

light grey (LG) RAL 7035



Schuko sockets

230 V, 16 A, 2 P + E.
Cover conceals the fixing
screws beneath. Cover
made of thermoplastic with
an aperture angle of 180° -
**absolutely maintenance-
free and elegant product
design.**

Surface mounting wall sockets

An alternative to sockets with
shrouded contacts **of cables**



Sockets 16 - 125 A

IP 44

p. 3

IP 67

p. 3-5



Mini combinations with Schuko socket

16 and 32 A

IP 44

p. 3



Mondo CEE wall sockets

16 and 32 A

surface and flush mounting

IP 44

p. 7 - 9



Schuko sockets

16A

panel mounting

p. 11



Mondo Schuko sockets

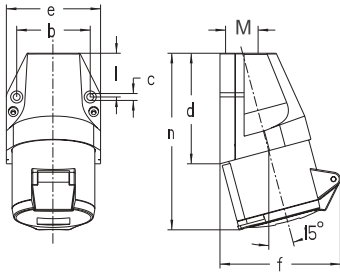
16A

panel mounting

surface and flush mounting

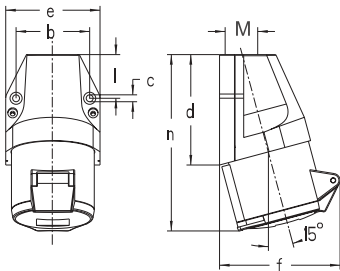
p. 11





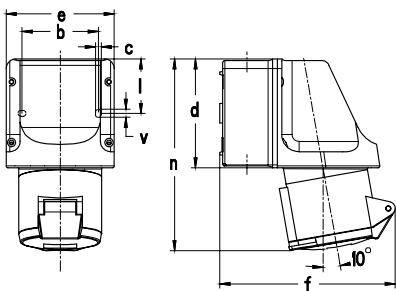
Amp.	16			32		
Pole	3	4	5	3	4	5
b	45.5	60	60	60	60	60
c	5.3	5.3	5.3	5.3	5.3	5.3
d	74	80	80	97	97	97
e	60	74	74	82	82	82
f	75	86	90	103	103	105
l	28	31	31	45	45	45
n	120	128	129	154	154	155
M	20	20	20	25	25	25

Wall sockets,
external fixing, 1 top cable entry,
IP 44



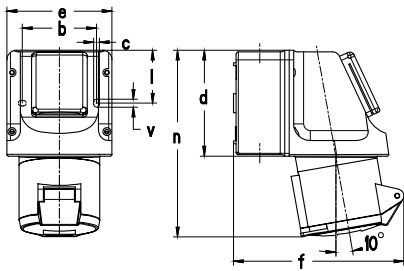
Amp.	16	32
Pole	5	5
b	60	60
c	5.3	5.3
d	80	97
e	74	82
f	90	105
l	31	45
n	129	155
M	20	25

Wall sockets,
red version, external fixing,
1 top cable entry,
IP 44



Amp.	16			32		
Pole	3	4	5	3	4	5
b	66.5	66.5	66.5	66.5	66.5	66.5
c	5	5	5	5	5	5
d	96	96	96	96	96	96
e	95	95	95	95	95	95
f	140	143	146	154	154	157
l	47.5	47.5	47.5	47.5	47.5	47.5
n	160	164	164	173	173	173
v	7	7	7	7	7	7
M	20/25	20/25	20/25	20/25	20/25	20/25

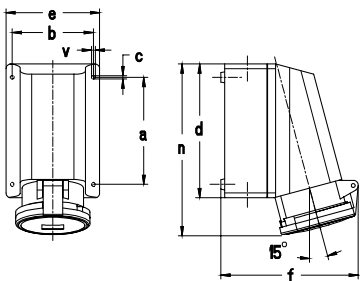
Wall sockets,
internal fixing,
2 knock-out cable entries both, top and bottom
IP 44



Amp.	16		32	
Pole	3	5	3	5
b	66.5	66.5	66.5	66.5
c	5	5	5	5
d	96	96	96	96
e	95	95	95	95
f	140	146	154	157
l	47.5	47.5	47.5	47.5
n	160	164	173	173
v	7	7	7	7
M	20/25	20/25	20/25	20/25

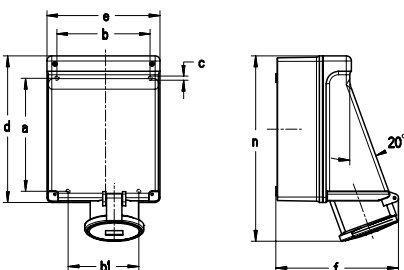
Mini combinations, CEEtyp wall socket
with Schuko socket,
16 A, 230 V, 2 P + E, IP 44
2 cable entries both, top and bottom

- 1) unwired
- 2) Schuko socket fused with fuse 6.3 A „G“, 5 x 20 mm
- 3) 16 A and 32 A supply lines required



Amp.	63		
Pole	3	4	5
a	136	136	136
b	104	104	104
c	4.2	4.2	4.2
d	172	172	172
e	121	121	121
f	178	178	178
n	220	220	220
v	5	5	5
M	32	32	32

Wall sockets,
internal fixing,
cable entries: 1 x top (open),
2 knock-out cable entries, alternatively top or bottom,
IP 44



Amp.	63		
Pole	3	4	5
a	183	183	183
b	151	151	151
b1	114	114	114
c	6.5	6.5	6.5
d	237	237	237
e	183	183	183
f	196	196	196
n	302	302	302
M	25/32	25/32	25/32

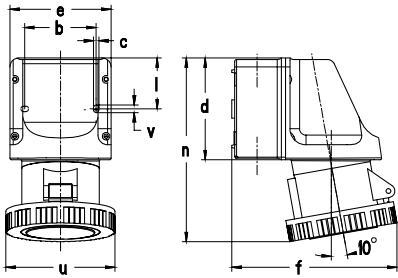
Wall sockets,
internal fixing,
cable entries: 2 x top, 2 x bottom (knock-out)
IP 44



Ampère	Poles	110 V	230 V	400 V	500 V	> 50 - 500 V	> 50 - 500 V
		50 a. 60 Hz	50 a. 60 Hz	50 a. 60 Hz	50 a. 60 Hz	100 - 300 Hz	over 300 - 500 Hz
		3pole 4h 4pole 4h 5pole 4h	3pole 6h 4pole 9h 5pole 9h	3pole 9h 4pole 6h 5pole 6h	3pole 7h 4pole 7h 5pole 7h	3pole 10h 4pole 10h 5pole 10h	3pole 2h 4pole 2h 5pole 2h

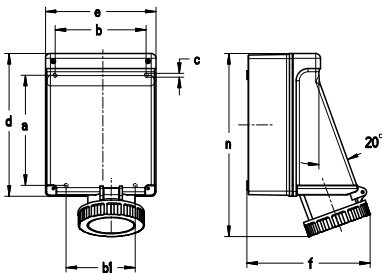


Part numbers											
	16	3	110 304	110 306	110 309				10/60	161	
	16	4	110 404	110 409	110 406	110 407	110 410	110 402	10	209	
	16	5	110 504	110 509	110				10/60	227	
	32	3	130 304	130 306	130 309				10	291	
	32	4	130 404	130 409	130 406	130 407	130 410	130 402	10	300	
	32	5	130 504	130 509	130				10/60	320	
	<i>pic. 130</i>										
		16	5			113				10/60	227
		32	5			133				10/60	320
<i>pic. 133</i>											
	16	3	111 304	111 306	111 309				5	356	
	16	4	111 404	111 409	111 406	111 407	111 410	111 402	5	389	
	16	5	111 504	111 509	111				5	425	
	32	3	131 304	131 306	131 309				5	426	
	32	4	131 404	131 409	131 406	131 407	131 410	131 402	5	453	
	32	5	131 504	131 509	131				5	489	
<i>pic. 131</i>											
	16	3		114 306					5	457	
	16	3		115 306 ²⁾					5	467	
	32	3		134 306 ³⁾					5	563	
	32	3		135 306 ²⁾					5	595	
	16	5			114				5	525	
	16	5			114 UV ¹⁾				5	525	
	16	5			115 ²⁾				5	537	
	32	5			134 ³⁾				5	538	
	32	5			134 UV ^{1, 3)}				5	538	
32	5			135 ²⁾				5	619		
<i>pic. 134</i>											
	63	3	161 304	161 306	161 309				1	825	
	63	4	161 404	161 409	161 406	161 407	161 410	161 402	2	1046	
	63	5	161 504	161 509	161				2	1105	
<i>pic. 161</i>											
	63	3	163 304	163 306	163 309				1	1590	
	63	4	163 404	163 409	163 406	163 407	163 410	163 402	2	1830	
	63	5	163 504	163 509	163				2	1900	
<i>pic. 163</i>											



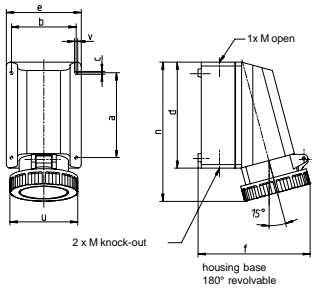
Amp.	16			32		
Pole	3	4	5	3	4	5
b	66.5	66.5	66.5	66.5	66.5	66.5
c	5	5	5	5	5	5
d	96	96	96	96	96	96
e	95	95	95	95	95	95
f	140	144	147	154	156	156
l	47.5	47.5	47.5	47.5	47.5	47.5
n	164	164	164	176	176	176
u	72	81	88	96	96	103
v	7	7	7	7	7	7
M	20/25	20/25	20/25	20/25	20/25	20/25

Wall sockets,
internal fixing,
2 knock-out cable entries both, top and bottom
IP 67



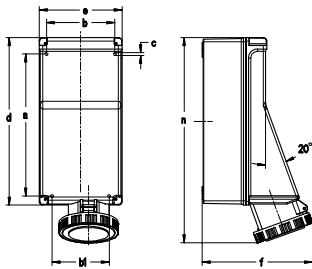
Amp.	63		
Pole	3	4	5
a	183	183	183
b	151	151	151
b1	114	114	114
c	6.5	6.5	6.5
d	237	237	237
e	183	183	183
f	209	209	209
n	309	309	309
M	25/32	25/32	25/32

Wall sockets,
internal fixing,
cable entries: 2 x top, 2 x bottom (knock-out),
IP 67



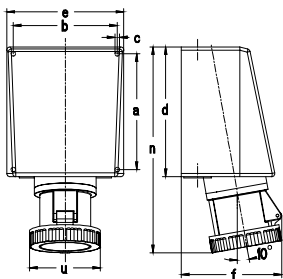
Amp.	63		
Pole	3	4	5
a	136	136	136
b	104	104	104
c	4.2	4.2	4.2
d	172	172	172
e	121	121	121
f	178	178	178
n	224	224	224
u	110	110	110
v	5	5	5
M	32	32	32

Wall sockets,
internal fixing,
cable entries: 1 x top (open),
2 x knock-out cable entries, alternatively top
or bottom
IP 67



Amp.	125		
Pole	3	4	5
a	316	316	316
b	151	151	151
b1	126	126	126
c	6.5	6.5	6.5
d	370	370	370
e	183	183	183
f	243	243	243
n	450	450	450
M	40	40	40

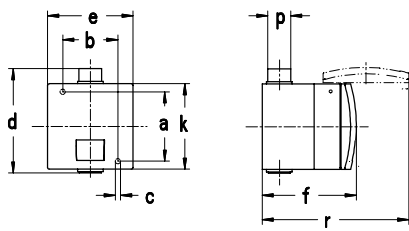
Wall sockets with multi contacts
for high contact pressure and easy
withdrawal,
internal fixing,
cable entries:
top: 1 x M 50 and 1 x M 20,
bottom: 2 x M 40,
with terminal block 5 x 50 mm²,
OK = without terminal block,
IP 67



Amp.	125		
Pole	3	4	5
a	240	240	240
b	200	200	200
c	7	7	7
d	263	263	263
e	220	220	220
f	190	190	190
n	406	406	406
u	130	130	130
M 1	50/20	50/20	50/20
M 2	40	40	40

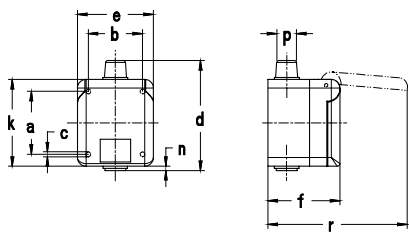
Wall sockets with multi contacts
for high contact pressure and withdrawal,
internal fixing,
cable entries:
top: 1 x M 50 and 1 x M 20, bottom: 2 x M 40,
with terminal block 5 x 50 mm²,
OK = without terminal block,
IP 67

   2P+E 3P+E 3P+N+E	Ampère	Poles	110 V	230 V	400 V	500 V	> 50 - 500 V	> 50 - 500 V				
			50 a. 60 Hz	50 a. 60 Hz	50 a. 60 Hz	50 a. 60 Hz	100 - 300 Hz	over 300 - 500 Hz				
Part numbers												
 pic. 139	16	3	119 304	119 306	119 309				5	409		
	16	4	119 404	119 409	119 406	119 407	119 410	119 402	5	440		
	16	5	119 504	119 509	119				5	470		
	32	3	139 304	139 306	139 309				5	492		
	32	4	139 404	139 409	139 406	139 407	139 410	139 402	5	492		
	32	5	139 504	139 509	139				5	551		
	 pic. 168	63	3	168 304	168 306	168 309				2	1600	
		63	4	168 404	168 409	168 406	168 407	168 410	168 402	2	1930	
63		5	168 504	168 509	168				2	2000		
 pic. 169	63	3	169 304	169 306	169 309				2	865		
	63	4	169 404	169 409	169 406	169 407	169 410	169 402	2	1086		
	63	5	169 504	169 509	169				2	1148		
 pic. 178	125	3	178 304	178 306	178 309				1	2540		
	125	4	178 404	178 409	178 406	178 407	178 410	178 402	1	3180		
	125	5	178 504	178 509	178				1	3890		
	125	3	178 304 OK	178 306 OK	178 309 OK				1	1970		
 pic. 179	125	3	179 304	179 306	179 309				1	2720		
	125	4	179 404	179 409	179 406	179 407	179 410	179 402	1	3260		
	125	5	179 504	179 509	179				1	3800		
	125	3	179 304 OK	179 306 OK	179 309 OK				1	1170		
	125	4	179 404 OK	179 409 OK	179 406 OK	179 407 OK	179 410 OK	179 402 OK	1	1710		
	125	5	179 504 OK	179 509 OK	179 OK				1	2250		



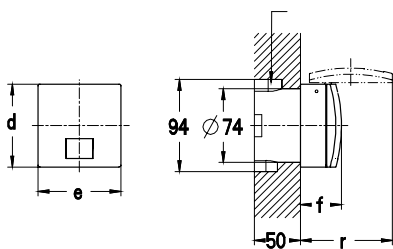
Amp.	16			32		
Pole	3	4	5	3	4	5
a	73	73	73	73	73	73
b	58	58	58	58	58	58
c	5.5	5.5	5.5	5.5	5.5	5.5
d	114	114	114	114	114	114
e	90	90	90	90	90	90
f	92	92	92	98	98	98
k	90	90	90	90	90	90
p	8/20	8/20	8/20	8/20	8/20	8/20
r	150	150	150	160	160	160

mondo Wall sockets,
surface mounting
RAL 7035 light grey,
IP 44



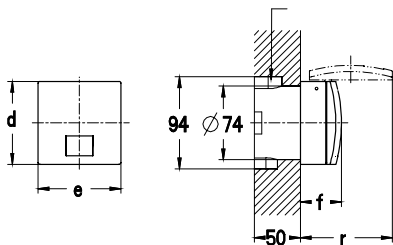
Amp.	16
Pole	3
a	58
b	50
c	4.5
d	98
e	70
f	68
k	80
n	5
p	7/17.5
r	130

mondo Wall sockets,
small version, surface mounting,
RAL 7035 light grey,
IP 44



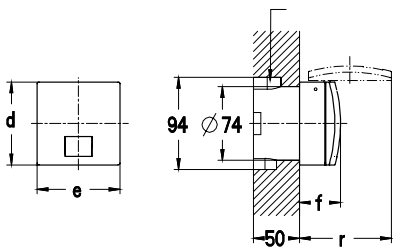
Amp.	16		
Pole	3	4	5
d	90	90	90
e	90	90	90
f	38	38	38
r	96	96	96

mondo Wall sockets,
flush mounting,
RAL 1013 pearl white,
with flush-type socket,
with plaster thickness adjustment,
IP 44











Amp.	16		
Pole	3	4	5
d	90	90	90
e	90	90	90
f	38	38	38
r	96	96	96

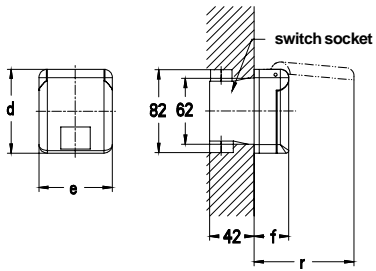
mondo Wall sockets,
flush mounting,
RAL 7035 light grey,
with flush-type socket,
with plaster thickness adjustment,
IP 44



Amp.	16		
Pole	3	4	5
d	90	90	90
e	90	90	90
f	38	38	38
r	96	96	96

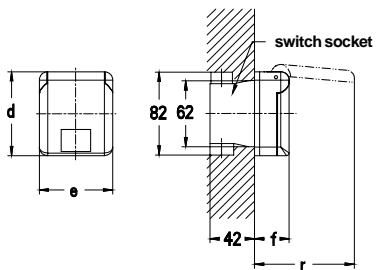
mondo Wall sockets,
flush mounting,
RAL 9010 clear white,
with flush-type socket,
with plaster thickness adjustment,
IP 44

   2P+E 3P+E 3P+N+E	Ampère	Poles	110 V 50 a. 60 Hz		230 V 50 a. 60 Hz		400 V 50 a. 60 Hz		500 V 50 a. 60 Hz		> 50 - 500 V 100 - 300 Hz			> 50 - 500 V over 300 - 500 Hz					
			3pole 4h	4pole 4h	5pole 4h	3pole 6h	4pole 9h	5pole 9h	3pole 9h	4pole 6h	5pole 6h	3pole 10h	4pole 10h	5pole 10h	3pole 2h	4pole 2h			5pole 2h
Part numbers																			
 <i>pic. 136</i>	16	3	116 304	116 306	116 309												5	311	
	16	4	116 404	116 409	116 406		116 407		116 410		116 402						5	320	
	16	5	116 504	116 509	116												5	328	
	32	3	136 304	136 306	136 309												5	368	
	32	4	136 404	136 409	136 406		136 407		136 410		136 402						5	370	
	32	5	136 504	136 509	136												5	380	
	<hr/>																		
	 <i>pic. 117306</i>	16	3	117 304	117 306	117 309												10	187
		<hr/>																	
 <i>pic. 416</i>		16	3	416 304	416 306	416 309												10	244
	16	4	416 404	416 409	416 406		416 407		416 410		416 402						10	264	
	16	5	416 504	416 509	416												10	263	
<hr/>																			
 <i>pic. 416LG</i>	16	3		416 306 LG													10	244	
	16	4			416 406 LG												10	264	
	16	5			416 LG												10	263	
<hr/>																			
 <i>pic. 416RW</i>	16	3		416 306 RW													10	244	
	16	4			416 406 RW												10	264	
	16	5			416 RW												10	263	
<hr/>																			



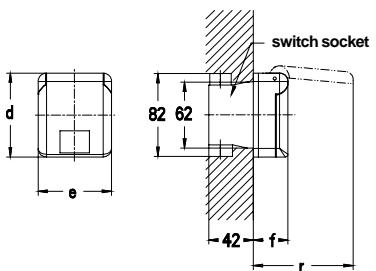
Amp.	16
Pole	3
d	80
e	70
f	33
r	96

mondo CEE wall sockets,
small version, flush-type,
RAL 1013 pearl white,
with flush-type socket,
with plaster thickness adjustment,
IP 44



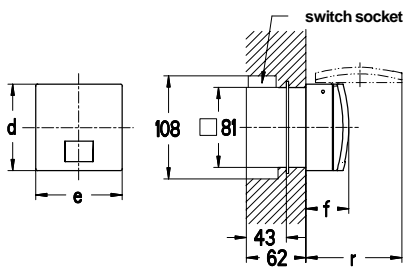
Amp.	16
Pole	3
d	80
e	70
f	33
r	96

mondo CEE wall sockets,
small version, flush-type,
RAL 7035 light grey,
with flush-type socket,
with plaster thickness adjustment,
IP 44



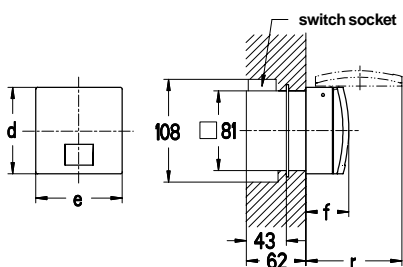
Amp.	16
Pole	3
d	80
e	70
f	33
r	96

mondo CEE wall sockets,
small version, flush-type,
RAL 9010 clear white,
with flush-type socket,
with plaster thickness adjustment,
IP 44



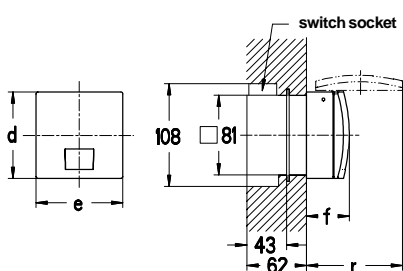
Amp.	32		
Pole	3	4	5
d	90	90	90
e	90	90	90
f	45	45	45
r	104	104	104

mondo CEE wall sockets,
flush-type,
RAL 1013 pearl white,
with flush-type socket,
with plaster thickness adjustment,
IP 44



Amp.	32		
Pole	3	4	5
d	90	90	90
e	90	90	90
f	45	45	45
r	104	104	104

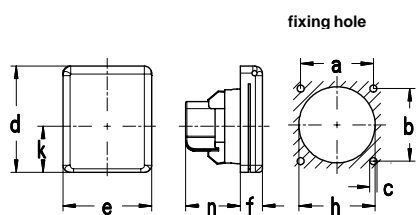
mondo CEE wall sockets,
flush-type,
RAL 7035 light grey,
with flush-type socket,
with plaster thickness adjustment,
IP 44



Amp.	32		
Pole	3	4	5
d	90	90	90
e	90	90	90
f	45	45	45
r	104	104	104

mondo CEE wall sockets,
flush-type,
RAL 9010 clear white,
with flush-type socket,
with plaster thickness adjustment,
IP 44

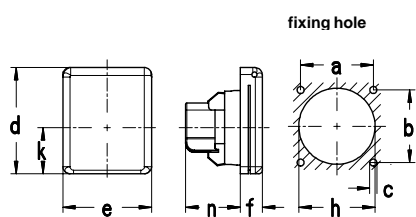
3 2P+E 4 3P+E 5 3P+N+E			Ampère	Poles	110 V 50 a. 60 Hz 3pole 4pole 5pole 4h 4h 4h	230 V 50 a. 60 Hz 3pole 4pole 5pole 6h 9h 9h	400 V 50 a. 60 Hz 3pole 4pole 5pole 9h 6h 6h	500 V 50 a. 60 Hz 3pole 4pole 5pole 7h 7h 7h	> 50 - 500 V 100 - 300 Hz 3pole 4pole 5pole 10h 10h 10h	> 50 - 500 V over 300 - 500 Hz 3pole 4pole 5pole 2h 2h 2h		
Part numbers												
<p><i>pic. 418306</i></p>			16	3	418 304	418 306	418 309				10	155
<p><i>pic. 418306LG</i></p>			16	3		418 306 LG					10	155
<p><i>pic. 418306RW</i></p>			16	3		418 306 RW					10	155
<p><i>pic. 436</i></p>			32	3	436 304	436 306	436 309				10	361
			32	4	436 404	436 409	436 406	436 407	436 410	436 402	10	379
			32	5	436 504	436 509	436				10	369
<p><i>pic. 436LG</i></p>			32	3		436 306 LG					10	361
			32	4			436 406 LG				10	379
			32	5			436 LG				10	369
<p><i>pic. 436RW</i></p>			32	3		436 306 RW					10	361
			32	4			436 406 RW				10	379
			32	5			436 RW				10	369



Amp.	16
Pole	2
a	38
b	38
c	42
d	60
e	50
f	12.5
h	43.5
k	26
n	26.5

fixing dimensions = a + b,
flange dimensions = d + e

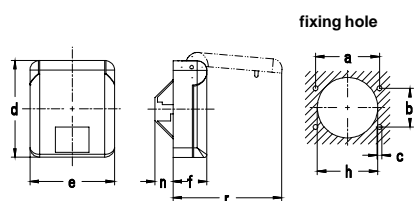
Schuko sockets,
panel socket straight,
IP 44



Amp.	16
Pole	2
a	60
b	60
c	42
d	75
e	75
f	16.5
h	64
k	37.5
n	22.5

fixing dimensions = a + b,
flange dimensions = d + e

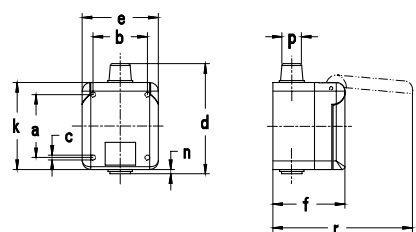
Schuko sockets,
panel sockets straight,
IP 44



Amp.	16
Pole	2
a	53
b	32
c	42
d	80
e	70
f	28
h	50
n	18
r	91

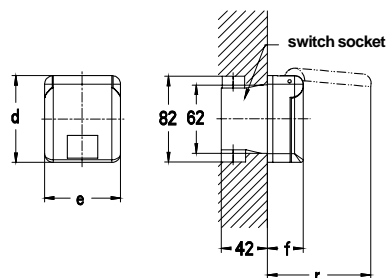
fixing dimensions = a + b,
flange dimensions = d + e

Schuko sockets,
mondo panel sockets straight,
RAL 7035 light grey,
IP 44



Amp.	16
Pole	2
a	58
b	50
c	4.5
d	98
e	70
f	68
k	80
n	5
p	7/17.5
r	130

Schuko sockets,
mondo wall socket,
surface mounting,
RAL 7035 light grey,
IP 44



Amp.	32
Pole	4
d	80
e	70
f	33
r	96

Schuko sockets,
mondo wall socket,
flush mounting,
RAL 1013 pearl white,
with plaster thickness adjustment,
IP 44



2P+E

Ampère

Poles

250 V

2pole



Part numbers

 <i>pic. 10003</i>	16	2	10 003 (blue) 10 001 (grey) 10 014: protection against accidental contact acc. to BGV A2 for Schuko sockets	10	46
	16	2		10	46
 <i>pic. 10005</i>	16	2	10 005 (blue) 10 006 (grey) 10 014: protection against accidental contact acc. to BGV A2 for Schuko sockets	10	70
	16	2		10	70
 <i>pic. 10004</i>	16	2	10 004	10	94
 <i>pic. 10007</i>	16	2	10 007	10	153
 <i>pic. 110306</i>	16	2	10 008	10	120