

Panel sockets, also for installation channel IEC/EN 60 309



Panel sockets

with smooth blending radius from flange to shroud, IP 44. For application in areas with increased hygiene requirements - **easy cleaning**.



Cable channel installation of CEE panel socket (shroud-version).



Cable channel installation of CEE panel socket (Mondo-version).

Available in three colours:

pearl white (PW) RAL 1013

clear white (RW) RAL 9010

light grey (LG) RAL 7035

matching your installation.

Multi contact

For more than 30 years all 125 A devices come with multi contacts.

They guarantee **easy withdrawal** and **constant contact pressure** over the years.



The multi contact ring, consisting of 13 lamellas, transmits 28 A per lamella, i.e. the transition from pin to sleeve is designed for 364 A - **high security**.

The spring-mounted lamellas are **self-wiping**.

For the required channel installation sockets please have a look at the catalogues of cable channel manufacturers.

Please note special flange and fixing dimensions.

Panel sockets straight

16 - 63 A
IP 44 p. 33

Panel sockets angled

16 - 63 A
IP 44 p. 35



Panel sockets straight

16 - 125 A
IP 67 p. 37

Panel sockets angled

16 - 125 A
IP 67 p. 37



Panel sockets for switch cabinet installation

16 and 32 A
IP 44 p. 39



Mondo panel sockets

16 and 32 A
IP 44 p. 39



Panel sockets for installation channel

16 and 32 A
IP 44 p. 39



Mondo panel sockets for installation channel

16 and 32 A
IP 44 p. 41



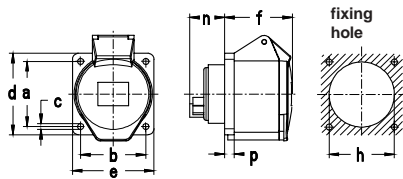
Junction boxes

p. 43

Adapter flanges

p. 43

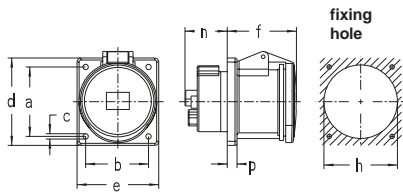




Amp.	16			32		
Pole	3	4	5	3	4	5
a	60	60	60	60	60	60
b	60	60	60	60	60	60
c	5.5	5.5	5.5	5.5	5.5	5.5
d	75	75	75	75	75	75
e	75	75	75	75	75	75
f	52	53	53	65	65	65
h	46	60	60	60	60	60
n	28	28	28	27	27	27
p	6	9	9	9	9	9

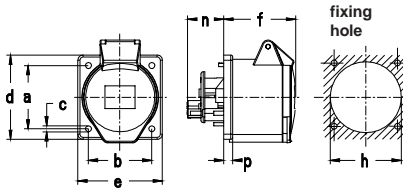
Suitable blind flange, part no. 10 015:	
a	60
b	60
c	5.2
d	75
e	75
p	6

Panel sockets straight,
flange dimensions 75 x 75 mm,
fingerproof acc. to BGV A2,
IP 44



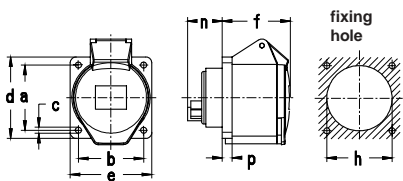
Amp.	63		
Pole	3	4	5
a	85	85	85
b	77	77	77
c	6.5	6.5	6.5
d	107	107	107
e	100	100	100
f	85	85	85
h	90	90	90
n	52	52	52
p	12	12	12

Panel sockets straight,
flange dimensions 107 x 100 mm,
fingerproof acc. to BGV A2,
IP 44



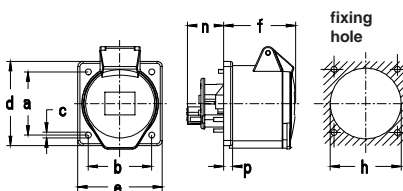
Amp.	16		32		
Pole	4	5	3	4	5
a	60	60	60	60	60
b	60	60	60	60	60
c	5.5	5.5	5.5	5.5	5.5
d	80	80	80	80	80
e	80	80	80	80	80
f	60	60	60	60	60
h	67	67	71	71	71
n	32	32	32	32	32
p	8.5	8.5	8.5	8.5	8.5

Panel sockets straight,
flange screwed on,
flange dimensions 80 x 80 mm,
fingerproof acc. to BGV A2
(also suitable for 80 x 80 mm installation channels),
IP 44



Amp.	16
Pole	3
a	47
b	47
c	5.5
d	62
e	62
f	52
h	46
n	28
p	6

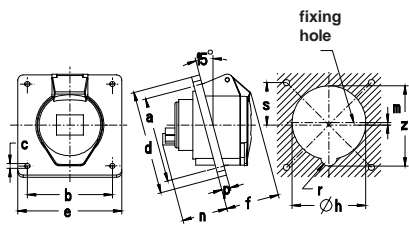
Panel sockets straight,
flange dimensions 62 x 62 mm,
fingerproof acc. to BGV A2,
IP 44



Amp.	16
Pole	3
a	47
b	47
c	5.5
d	62
e	62
f	58
h	50
n	32
p	8.5

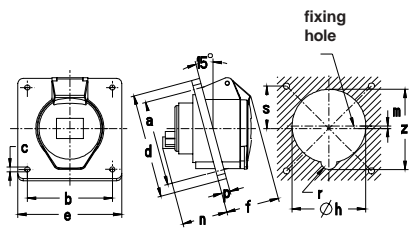
Panel sockets straight,
flange screwed on,
flange dimensions 62 x 62 mm,
fingerproof acc. to BGV A2,
IP 44

3 2P+E 4 3P+E 5 3P+N+E			Ampère	Poles	110 V 50 a. 60 Hz 3pole 4pole 5pole 4h 4h 4h	230 V 50 a. 60 Hz 3pole 4pole 5pole 6h 9h 9h	400 V 50 a. 60 Hz 3pole 4pole 5pole 9h 6h 6h	500 V 50 a. 60 Hz 3pole 4pole 5pole 7h 7h 7h	> 50 - 500 V 100 - 300 Hz 3pole 4pole 5pole 10h 10h 10h	> 50 - 500 V over 300 - 500 Hz 3pole 4pole 5pole 2h 2h 2h		
Part numbers												
	16	3	411 304	411 306	411 309						10	128
	16	4	410 404	410 409	410 406		410 407	410 410	410 402		10	160
	16	5	410 504	410 509	410						10	165
	32	3	430 304	430 306	430 309						10	208
	32	4	430 404	430 409	430 406		430 407	430 410	430 402		10	215
	32	5	430 504	430 509	430						10	226
<i>pic. 430</i>												
	63	3	460 304	460 306	460 309						5	586
	63	4	460 404	460 409	460 406		460 407	460 410	460 402		5	645
	63	5	460 504	460 509	460						5	776
<i>pic. 460</i>												
	16	4	411 404	411 409	411 406		411 407	411 410	411 402		10	200
	16	5	411 504	411 509	411						10	218
	32	3	431 304	431 306	431 309						10	223
	32	4	431 404	431 409	431 406		431 407	431 410	431 402		10	230
	32	5	431 504	431 509	431						10	283
	<i>pic. 431</i>											
	16	3	410 304	410 306	410 309						10/60	117
<i>pic. 410 306</i>												
	16	3	412 304	412 306	412 309						10	129
<i>pic. 412 306</i>												



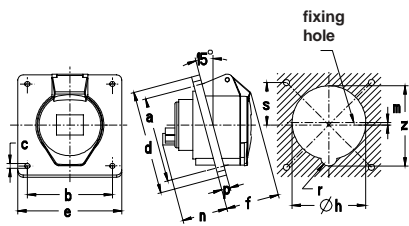
Amp.	16			32		
Pole	3	4	5	3	4	5
a	47	60	60	60	60	70
b	47	60	60	60	60	60
c	5.5	5.5	5.5	5.5	5.5	5.5
d	68	75	85	90	90	95
e	62	75	75	75	75	80
f	45	51	51	52	52	56
h	51	60	68	67	67	76
m	-	2	2	-	-	2.5
n	41	38	38	47	47	47
p	6	9	9	9	9	9
r	6.5	7.5	8	7.5	7.5	8.5
s	-	-	30	-	-	35
y	52.5	62	-	71	71	-
z	57	64	73	76	76	83

Panel sockets angled,
fingerproof acc. to BGV A2,
IP 44



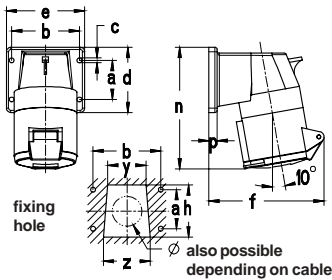
Amp.	16		32			63		
Pole	4	5	3	4	5	3	4	5
a	85	85	85	85	85	85	85	85
b	77	77	77	77	77	77	77	77
c	5.5	5.5	5.5	5.5	5.5	6.5	6.5	6.5
d	100	100	100	100	100	107	100	107
e	92	92	92	92	92	100	92	100
f	51	51	52	52	56	79	79	79
h	75	70	75	75	78	81	81	84
m	2	2	-	2.5	2.5	-	3	3
n	38	38	47	47	47	64	64	64
p	9	9	9	9	9	12	12	12
r	7.5	7.5	7.5	7.5	8.5	8	8	9
s	42.5	42.5	-	42.5	42.5	-	42.5	42.5
y	-	-	80	80	-	85	85	-
z	85	74	85	85	85	90	90	90

Panel sockets angled,
fixing dimensions 85 x 77 mm,
fingerproof acc. to BGV A2,
IP 44



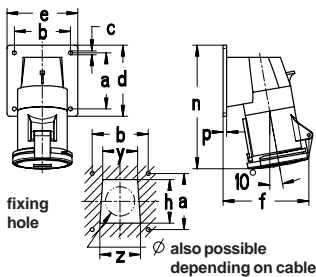
Amp.	16	32	63
Pole	5	5	5
a	90	90	90
b	90	90	90
c	5.5	5.5	6.5
d	110	110	114
e	110	110	114
f	51	56	79
h	70	78	86
m	2	2.5	2.5
n	38	47	64
p	9	9	12
r	7.5	8.5	10
s	45	45	45
z	74	85	94

Panel sockets angled,
fixing dimensions 90 x 90 mm,
16 - 63 A fingerproof acc. to BGV A2,
IP 44



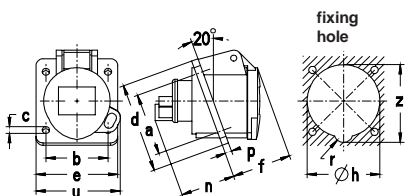
Amp.	16			32		
Pole	3	4	5	3	4	5
a	30	40	40	45	45	45
b	55	68	68	78	78	78
c	5.5	5.5	5.5	5.5	5.5	5.5
d	52	66	66	75	75	75
e	65	80	80	90	90	90
f	87	110	110	120	120	124
h	38	52	52	60	60	60
n	116	122	122	141	141	142
p	9.5	9.5	9.5	9.5	9.5	9.5
y	30	38	38	44	44	44
z	36	46	46	54	54	54

Panel sockets angled,
flange screwed on,
IP 44



Amp.	63		
Pole	3	4	5
a	90	90	90
b	90	90	90
c	6.2	6.2	6.2
d	114	114	114
e	114	114	114
f	140	140	140
h	70	70	70
n	194	194	194
p	6	6	6
y	56	56	56
z	65	65	65

Panel sockets angled,
flange screwed on,
IP 44



Amp.	16
Pole	3
a	47
b	47
c	5.5
d	68
e	62
f	46
h	55
n	41
p	5
r	5
u	65
z	58

Panel sockets angled,
with eyehook for padlock,
for locking with plug 212 306, 212 304 or
212 309,
IP 44


Ampère
Poles
110 V
50 a. 60 Hz
3pole 4pole 5pole
4h 4h 4h

230 V
50 a. 60 Hz
3pole 4pole 5pole
6h 9h 9h

400 V
50 a. 60 Hz
3pole 4pole 5pole
9h 6h 6h

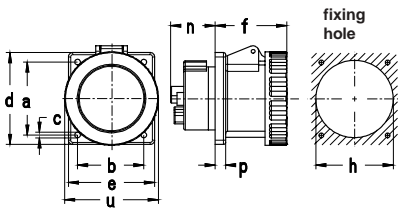
500 V
50 a. 60 Hz
3pole 4pole 5pole
7h 7h 7h

> 50 - 500 V
100 - 300 Hz
3pole 4pole 5pole
10h 10h 10h

> 50 - 500 V
over 300 - 500 Hz
3pole 4pole 5pole
2h 2h 2h

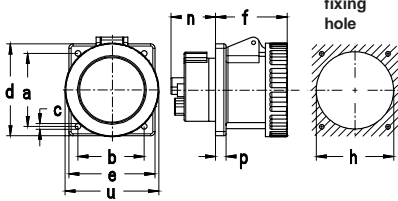
Part numbers

<p>pic. 530</p>	16	3	510 304	510 306	510 309				10	120
	16	4	510 404	510 409	510 406	510 407	510 410	510 402	10	160
	16	5	510 504	510 509	510				10	175
	32	3	530 304	530 306	530 309				10	207
	32	4	530 404	530 409	530 406	530 407	530 410	530 402	10	216
	32	5	530 504	530 509	530				10	240
<p>pic. 531</p>	16	4	511 404	511 409	511 406	511 407	511 410	511 402	10	181
	16	5	511 504	511 509	511				10	201
	32	3	531 304	531 306	531 309				10	218
	32	4	531 404	531 409	531 406	531 407	531 410	531 402	10	236
	32	5	531 504	531 509	531				10	254
	63	3	560 304	560 306	560 309				5	593
63	4	560 404	560 409	560 406	560 407	560 410	560 402	5	677	
63	5	560 504	560 509	560				5	708	
<p>pic. 532</p>	16	5	512 504	512 509	512				10	198
	32	5	532 504	532 509	532				10	259
	63	5	562 504	562 509	562				5	715
<p>pic. 534</p>	16	3	514 304	514 306	514 309				10	158
	16	4	514 404	514 409	514 406	514 407	514 410	514 402	10	202
	16	5	514 504	514 509	514				10	220
	32	3	534 304	534 306	534 309				10	300
	32	4	534 404	534 409	534 406	534 407	534 410	534 402	10	285
	32	5	534 504	534 509	534				10	305
<p>pic. 564</p>	63	3	564 304	564 306	564 309				5	646
	63	4	564 404	564 409	564 406				5	695
	63	5	564 504	564 509	564				5	744
<p>pic. 512 306</p>	16	3	512 304	512 306	512 309				10	120



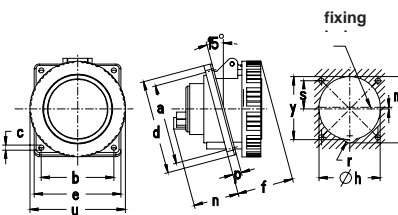
Amp.	16			32			63		
Pole	3	4	5	3	4	5	3	4	5
a	47	60	60	60	60	60	85	85	85
b	47	60	60	60	60	60	77	77	77
c	5.5	5.5	5.5	5.5	5.5	5.5	6.5	6.5	6.5
d	62	75	75	75	75	75	107	107	107
e	62	75	75	75	75	75	100	100	100
f	52	52	52	65	65	65	83	83	83
h	46	60	60	60	60	60	90	90	90
n	28	28	28	27	27	27	52	52	52
p	6	9	9	9	9	9	12	12	12
u	72	81	88	96	96	103	110	110	110

Panel sockets straight,
fingerproof acc. to BGV A2,
IP 67



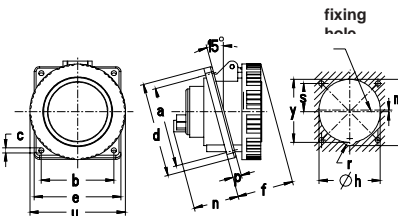
Amp.	125		
Pole	3	4	5
a	90	90	90
b	90	90	90
c	6.5	6.5	6.5
d	114	114	114
e	114	114	114
f	96	96	96
h	90	90	90
n	64	64	64
p	12	12	12
u	130	130	130

Panel sockets straight,
with multi contact,
handproof acc. to BGV A2,
IP 67



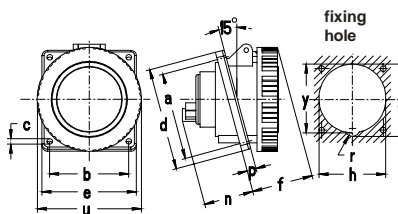
Amp.	16			32			63		
Pole	3	4	5	3	4	5	3	4	5
a	47	85	85	85	85	85	85	85	85
b	47	77	77	77	77	77	77	77	77
c	5.5	5.5	5.5	5.5	5.5	5.5	6.5	6.5	6.5
d	68	100	100	100	100	100	107	107	107
e	62	92	92	92	92	92	100	100	100
f	49	52	52	56	56	60	82	82	82
h	51	73	70	73	73	78	81	81	84
m	-/-	2	2	-/-	2.5	2.5	-/-	2.5	3
n	41	38	38	47	47	47	64	64	64
p	6	9	9	9	9	9	12	12	12
r	6.5	7.5	7.5	7.5	7.5	8.5	8	8	9
s	-/-	42.5	42.5	-/-	42.5	42.5	-/-	42.5	42.5
u	72	81	88	96	96	103	110	110	110
y	53	76	-/-	76	76	-/-	85	85	-/-
z	57	82	74	82	82	85	90	90	90

Panel sockets angled,
fingerproof acc. to BGV A2,
IP 67



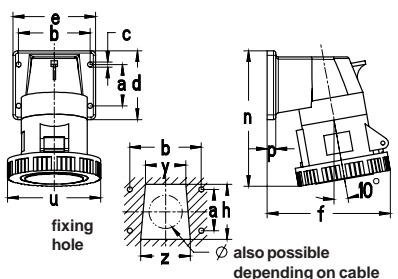
Amp.	125		
Pole	3	4	5
a	90	90	90
b	90	90	90
c	6.5	6.5	6.5
d	114	114	114
e	114	114	114
f	94	94	94
h	90	90	88
m	-/-	8	8
n	75	75	75
p	12	12	12
r	8	8	9.5
s	-/-	45	45
u	130	130	130
y	96	96	96
z	102	102	104

Panel sockets angled,
with multi contact,
handproof acc. to BGV A2,
IP 67



Amp.	16		32			63
Pole	4	5	3	4	5	5
a	60	60	60	60	70	90
b	60	60	60	60	60	90
c	5.5	5.5	5.5	5.5	5.5	6.5
d	75	85	90	90	95	114
e	75	75	75	75	80	114
f	52	52	56	56	60	72
h	60	68	67	67	76	86
m	-/-	2	-/-	-/-	2.5	2.5
n	38	38	47	47	47	82
p	9	9	9	9	9	6
r	7.5	8	7.5	7.5	8.5	10
s	-/-	30	-/-	-/-	35	45
u	81	88	96	96	103	110
y	62	-/-	71	71	-/-	-/-
z	64	73	76	76	83	94

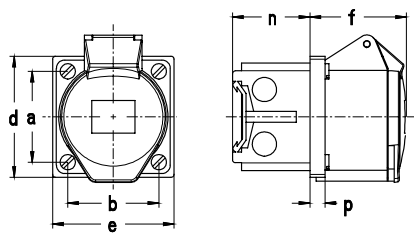
Panel sockets angled,
fingerproof acc. to BGV A2,
IP 67



Amp.	16			32			63		
Pole	3	4	5	3	4	5	3	4	5
a	30	40	40	45	45	45	90	90	90
b	55	68	68	78	78	78	90	90	90
c	5.5	5.5	5.5	5.5	5.5	5.5	6.2	6.2	6.2
d	52	66	66	75	75	75	114	114	114
e	65	80	80	90	90	90	114	114	114
f	88	108	108	121	121	123	143	143	143
h	38	52	52	60	60	60	70	70	70
n	109	123	123	145	145	145	203	203	203
p	9.5	9.5	9.5	9.5	9.5	9.5	6	6	6
u	72	81	88	96	96	103	110	110	110
y	30	38	38	44	44	44	56	56	56
z	36	46	46	54	54	54	65	65	65

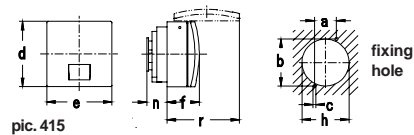
Panel sockets angled,
flange screwed on,
IP 67

	2P+E 3P+E 3P+N+E			Ampère	Poles	110 V	230 V	400 V	500 V	> 50 - 500 V	> 50 - 500 V		
	50 a. 60 Hz	50 a. 60 Hz	50 a. 60 Hz			50 a. 60 Hz	100 - 300 Hz	over 300 - 500 Hz					
Part numbers													
 <i>pic. 439</i>	16	3	419 304	419 306	419 309							10	139
	16	4	419 404	419 409	419 406	419 407	419 410	419 402				10	186
	16	5	419 504	419 509	419							10	202
	32	3	439 304	439 306	439 309							10	246
	32	4	439 404	439 409	439 406	439 407	439 410	439 402				10	252
	32	5	439 504	439 509	439							10	278
	63	3	469 304	469 306	469 309							5	599
	63	4	469 404	469 409	469 406	469 407	469 410	469 402				5	699
	63	5	469 504	469 509	469							5	799
 <i>pic. 479</i>	125	3	479 304	479 306	479 309							2	990
	125	4	479 404	479 409	479 406	479 407	479 410	479 402				2	1155
	125	5	479 504	479 509	479							2	1319
 <i>pic. 539</i>	16	3	519 304	519 306	519 309							10	142
	16	4	519 404	519 409	519 406	519 407	519 410	519 402				10	257
	16	5	519 504	519 509	519							10	223
	32	3	539 304	539 306	539 309							10	263
	32	4	539 404	539 409	539 406	539 407	539 410	539 402				10	287
	32	5	539 504	539 509	539							10	303
	63	3	569 304	569 306	569 309							5	638
	63	4	569 404	569 409	569 406	569 407	569 410	569 402				5	725
	63	5	569 504	569 509	569							5	832
 <i>pic. 579</i>	125	3	579 304	579 306	579 309							2	988
	125	4	579 404	579 409	579 406	579 407	579 410	579 402				2	1152
	125	5	579 504	579 509	579							10	22
 <i>pic. 537</i>	16	4	517 404	517 409	517 406	517 407	517 410	517 402				10	194
	16	5	517 504	517 509	517							10	212
	32	3	537 304	537 306	537 309							10	255
	32	4	537 404	537 409	537 406	537 407	537 410	537 402				10	273
	32	5	537 504	537 509	537							10	293
	63	5	567 504	567 509	567							5	843
 <i>pic. 538</i>	16	3	518 304	518 306	518 309							10	238
	16	4	518 404	518 409	518 406	518 407	518 410	518 402				10	256
	16	5	518 504	518 509	518							10	274
	32	3	538 304	538 306	538 309							10	339
	32	4	538 404	538 409	538 406	538 407	538 410	538 402				10	330
	32	5	538 504	538 509	538							10	350
	63	3	568 304	568 306	568 309							5	661
	63	4	568 404	568 409	568 406	568 407	568 410	568 402				5	720
	63	5	568 504	568 509	568							5	779



Amp.	16			32		
Pole	3	4	5	3	4	5
a	60	60	60	60	60	60
b	60	60	60	60	60	60
d	80	80	80	80	80	80
e	80	80	80	80	80	80
f	56	59	59	62	69	69
n	52	52	52	52	52	52
p	10	10	10	10	10	10

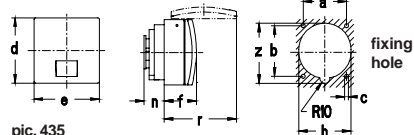
Panel sockets straight,
for switch cabinet installation,
junction box mountable on DIN-rails,
needs 4.5 module spaces,
IP 44



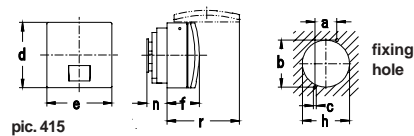
pic. 415

Amp.	16			32		
Pole	3	4	5	3	4	5
a	30.4	30.4	30.4	60	60	60
b	65.2	65.2	65.2	60	60	60
c	4.1	4.1	4.1	4.1	4.1	4.1
d	90	90	90	90	90	90
e	90	90	90	90	90	90
f	38	38	38	45	45	45
h	65	65	65	75	75	75
n	36	36	36	31	31	31
r	96	96	96	104	104	104
z	-/-	-/-	-/-	80	80	80

mondo panel sockets straight,
RAL 7035 light grey,
IP 44



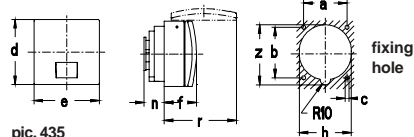
pic. 435



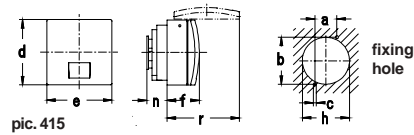
pic. 415

Amp.	16			32		
Pole	3	4	5	3	4	5
a	30.4	30.4	30.4	60	60	60
b	65.2	65.2	65.2	60	60	60
c	4.1	4.1	4.1	4.1	4.1	4.1
d	90	90	90	90	90	90
e	90	90	90	90	90	90
f	38	38	38	45	45	45
h	65	65	65	75	75	75
n	36	36	36	31	31	31
r	96	96	96	104	104	104
z	-/-	-/-	-/-	80	80	80

mondo panel sockets straight,
RAL 1013 pearl white,
IP 44



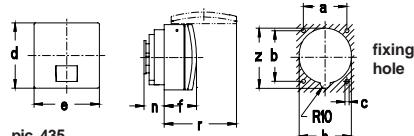
pic. 435



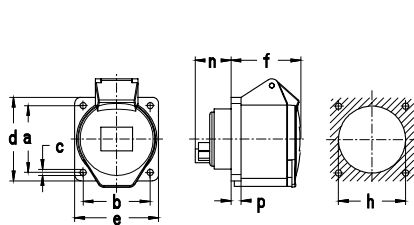
pic. 415

Amp.	16			32		
Pole	3	4	5	3	4	5
a	30.4	30.4	30.4	60	60	60
b	65.2	65.2	65.2	60	60	60
c	4.1	4.1	4.1	4.1	4.1	4.1
d	90	90	90	90	90	90
e	90	90	90	90	90	90
f	38	38	38	45	45	45
h	65	65	65	75	75	75
n	36	36	36	31	31	31
r	96	96	96	104	104	104
z	-/-	-/-	-/-	80	80	80

mondo panel sockets straight,
RAL 9010 clear white,
IP 44



pic. 435



Amp.	16			32		
Pole	3	4	5	3	4	5
a	60	60	60	60	60	60
b	60	60	60	60	60	60
c	5.5	5.5	5.5	5.5	5.5	5.5
d	75	75	75	75	75	75
e	75	75	75	75	75	75
f	52	53	53	65	65	65
h	46	60	60	60	60	60
n	28	28	28	27	27	27
p	6	9	9	9	9	9

Fixing dimensions = a + b, flange dimensions = d + e

Panel sockets straight,
also for installation channel,
channel fixing dimensions: 60 x 60 mm,
IP 44



Ampère

Poles

110 V
50 a. 60 Hz
3pole 4pole 5pole
4h 4h 4h

230 V
50 a. 60 Hz
3pole 4pole 5pole
6h 9h 9h

400 V
50 a. 60 Hz
3pole 4pole 5pole
9h 6h 6h






500 V
50 a. 60 Hz
3pole 4pole 5pole
7h 7h 7h

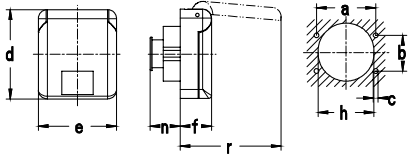
> 50 - 500 V
100 - 300 Hz
3pole 4pole 5pole
10h 10h 10h

> 50 - 500 V
over 300 - 500 Hz
3pole 4pole 5pole
2h 2h 2h



Part numbers

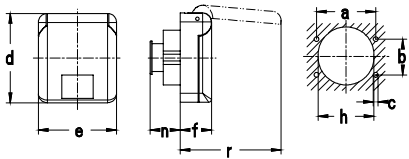
 <p><i>pic. 430 VS</i></p>	16	3	411 304 VS	411 306 VS	411 309 VS	410 407 VS					10	201
	16	4			410 406 VS						10	229
	16	5	410 504 VS	410 509 VS	410 VS						10	257
	32	3		430 306 VS							10	277
	32	4			430 406 VS						10	297
	32	5	430 504 VS	430 509 VS	430 VS						10	317
 <p><i>pic. 435</i></p>	16	3	415 304	415 306	415 309	415 407	415 410	415 402			10	200
	16	4	415 404	415 409	415 406						10	214
	16	5	415 504	415 509	415						10	263
	32	3	435 304	435 306	435 309						10	265
	32	4	435 404	435 409	435 406						10	271
	32	5	435 504	435 509	435						10	276
 <p><i>pic. 435 PW</i></p>	16	3		415 306 PW							10	200
	16	4			415 406 PW						10	214
	16	5			415 PW						10	263
	32	3		435 306 PW							10	265
	32	4			435 406 PW						10	271
	32	5			435 PW						10	276
 <p><i>pic. 435 RW</i></p>	16	3		415 306 RW							10	200
	16	4			415 406 RW						10	214
	16	5			415 RW						10	263
	32	3		435 306 RW							10	265
	32	4			435 406 RW						10	271
	32	5			435 RW						10	276
 <p><i>pic. 430</i></p>	16	3		411 306							10	128
	16	4			410 406						10	160
	16	5			410						10	165
	32	3		430 306							10	208
	32	4			430 406						10	215
	32	5			430						10	226



Amp.	16
Pole	3
a	53
b	32
c	4.2
d	80
e	70
f	28
h	50
n	29
r	91

Fixing dimensions = a + b,
Flange dimensions = d + e

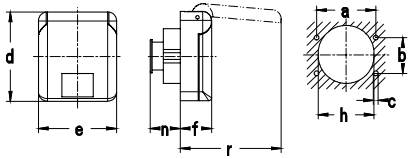
**mondo panel sockets,
also for installation channel,**
RAL 7035 light grey,
IP 44



Amp.	16
Pole	3
a	53
b	32
c	4.2
d	80
e	70
f	28
h	50
n	29
r	91

Fixing dimensions = a + b,
Flange dimensions = d + e

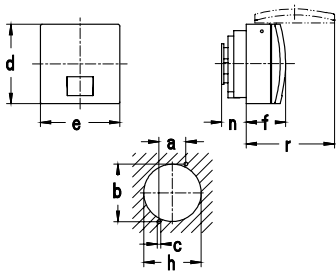
**mondo panel socket,
also for installation channel,**
RAL 1013 pearl white,
IP 44



Amp.	16
Pole	3
a	53
b	32
c	4.2
d	80
e	70
f	28
h	50
n	29
r	91

Fixing dimensions = a + b,
Flange dimensions = d + e

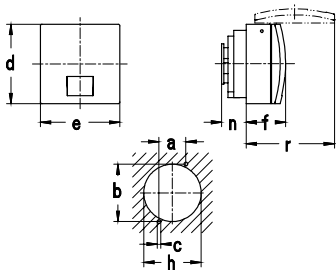
**mondo panel socket,
also for installation channel,**
RAL 9010 clear white,
IP 44



Amp.	16		
Pole	3	4	5
a	30.4	30.4	30.4
b	65.2	65.2	65.2
c	4.1	4.1	4.1
d	90	90	90
e	90	90	90
f	38	38	38
h	65	65	65
n	36	36	36
r	96	96	96

Fixing dimensions = a + b,
Flange dimensions = d + e

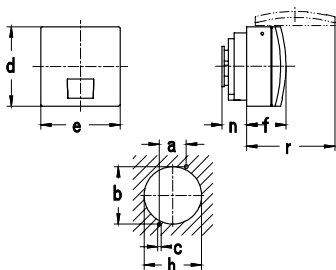
**mondo panel sockets,
also for installation channel,**
RAL 7035 light grey,
fixing dimensions at the channel socket:
67 mm,
IP 44



Amp.	16		
Pole	3	4	5
a	30.4	30.4	30.4
b	65.2	65.2	65.2
c	4.1	4.1	4.1
d	90	90	90
e	90	90	90
f	38	38	38
h	65	65	65
n	36	36	36
r	96	96	96

Fixing dimensions = a + b,
Flange dimensions = d + e

**mondo panel sockets,
also for installation channel,**
RAL 1013 pearl white,
fixing dimensions at the channel socket:
67 mm,
IP 44

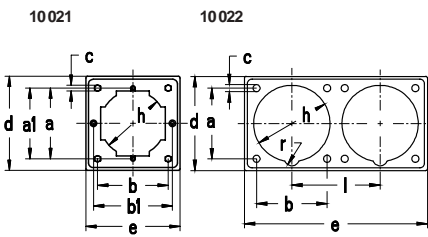


Amp.	16		
Pole	3	4	5
a	30.4	30.4	30.4
b	65.2	65.2	65.2
c	4.1	4.1	4.1
d	90	90	90
e	90	90	90
f	38	38	38
h	65	65	65
n	36	36	36
r	96	96	96

Fixing dimensions = a + b,
Flange dimensions = d + e

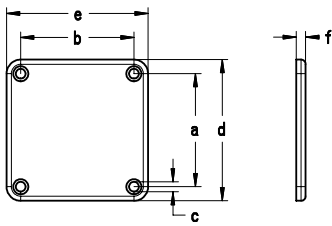
**mondo panel sockets,
also for installation channel,**
RAL 9010 clear white,
fixing dimensions at the channel socket:
67 mm,
IP 44

	Ampère	Poles	110 V 50 a. 60 Hz		230 V 50 a. 60 Hz			400 V 50 a. 60 Hz			500 V 50 a. 60 Hz			> 50 - 500 V 100 - 300 Hz			> 50 - 500 V over 300 - 500 Hz				 g	
			3pole 4h	4pole 4h	5pole 4h	3pole 6h	4pole 9h	5pole 9h	3pole 9h	4pole 6h	5pole 6h	3pole 7h	4pole 7h	5pole 7h	3pole 10h	4pole 10h	5pole 10h	3pole 2h	4pole 2h			5pole 2h
 <i>pic. 417306</i>	16	3	417 304		417 306			417 309												10	153	
 <i>pic. 417306PW</i>	16	3			417 306 PW															10	153	
 <i>pic. 417306RW</i>	16	3			417 306 RW															10	153	
 <i>pic. 415</i>	16	3			415 306															10	200	
	16	4						415 406													10	214
	16	5						415													10	263
 <i>pic. 415PW</i>	16	4						415 406 PW													10	214
	16	5						415 PW													10	263
 <i>pic. 415RW</i>	16	4						415 406 RW													10	214
	16	5						415 RW													10	263



	10021	10022
a	60	60
a1	60	/
b	67	60
b1	M5	/
c	80	6
d	80	80
e	80	156
h	55	65
l	/	75
r	/	6.5

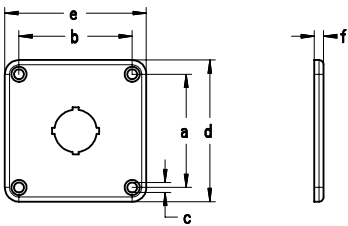
Adapter flanges,
for panel sockets with
flange dimensions 75 x 75
and fixing dimensions 60 x 60 mm,
IP 44



a	60
b	60
c	52
d	75
e	75
f	5

Blind flanges,
for panel sockets with
flange dimensions 75 x 75
and fixing dimensions 60 x 60 mm,
IP 44

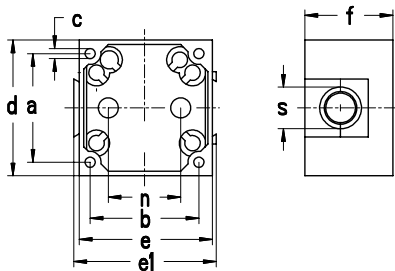
- 1) RAL 7035 light grey
- 2) RAL 1013 pearl white
- 3) RAL 9010 clear white



a	60
b	60
c	52
d	75
e	75
f	5

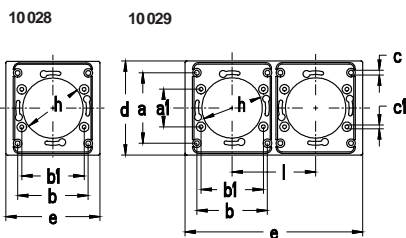
Flanges,
for built-in devices with diameter 22.5
IP 44

- 1) RAL 7035 light grey
- 2) RAL 1013 pearl white
- 3) RAL 9010 clear white



a	60
b	60
c	M4
d	76
e	76
e1	78
f	49
n	40
s	23

Junction boxes,
for panel sockets with flange
dimensions 75 x 75
and fixing dimensions 60 x 60,
IP 44



	10028	10029
a	60	60
a1	32	32
b	60	60
b1	53	53
c	42	42
c1	32	32
d	80	80
e	80	151
h	51	51
l	/	71

Cover plates,
small version
IP 44

- 1) RAL 1013 pearl white
- 2) RAL 7035 light grey
- 3) RAL 9010 clear white

Flanges, Junction Boxes, Cover Plates



		Part numbers			
 <p>pic. 10021</p>	1 part: 10 021		20	30	4
	2 part: 10 022 (centre to centre distance 75 mm)		10	23	
 <p>pic. 10015</p>	10 015 ¹⁾		20	24	
	10 015 PW ²⁾		20	24	
	10 015 RW ³⁾		20	24	
 <p>pic. 10011</p>	10 019 ¹⁾		20	23	
	10 019 PW ²⁾		20	23	
	10 019 RW ³⁾		20	23	
 <p>pic. 10011</p>	without terminal block: 10 010		10	96	
	with 5 terminal blocks: 10 011		10	106	
 <p>pic. 10028</p>	1 part: 10 028 ¹⁾		20	17	
	10 028 LG ²⁾		20	17	
	10 028 RW ³⁾		20	17	
	2 part: 10 029 ¹⁾ (centre to centre distance 71 mm)		10	33	
	10 029 LG ²⁾		10	33	
	10 029 RW ³⁾		10	33	