

Couplers IEC/EN 60 309



Couplers
with ergonomic form - for comfortable handling.



Suspension couplers
By means of two through-holes at the sides the suspension coupler can be quickly suspended.

Multi contact
For more than 30 years all 125 A devices come with multi contacts.

They guarantee **easy withdrawal** and **constant contact pressure** over the years.



Glands
There are also coupler versions available with extra large cable entries of 10 - 19.5 mm with 16 A up to 18 - 24.5 mm with 32 A - for **easy cable entry** with large cable sizes.



The multi contact ring, consisting of 13 lamellas, transmits 28 A per lamella, i.e. the transition from pin to sleeve is designed for 364 A - **high security**.

The spring-mounted lamellas are **self-wiping**.



Screwless coupler
16 A
with insulation displacement technique
IP 44

NEW

p. 27



Couplers 16 - 63 A
with flexible cable entry
IP 44

p. 27



Couplers 16 - 63 A
with cable gland
IP 44

p. 27



Couplers 16 - 125 A
with cable gland
IP 67

p. 29



Suspension couplers
16 and 32 A
with cable gland
IP 44

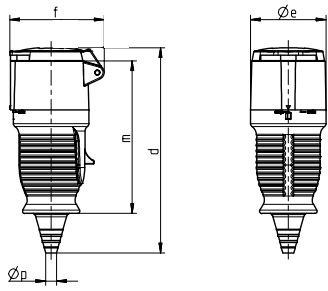
p. 29



Angled couplers
16 and 32 A
IP 44

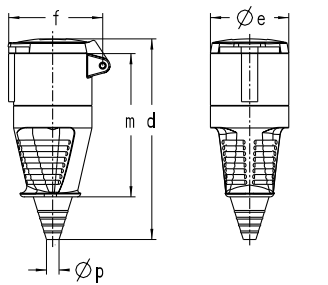
p. 29





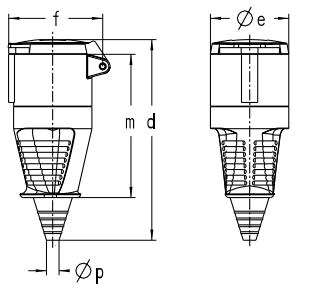
Amp.	16
Pole	5
d	183
Øe	67
f	84
m	136
Øp	8/21

Coupler, screwless, with insulation displacement technique, with flexible cable entry, IP 44



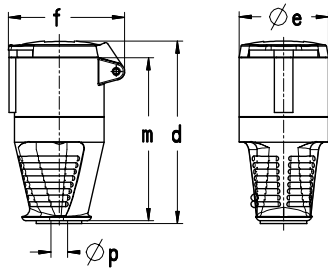
Amp.	16			32			63		
Pole	3	4	5	3	4	5	3	4	5
d	154	161	167	196	196	196	266	266	266
Øe	51	58	65	72	72	72	96	96	96
f	68	76	85	91	91	98	114	114	114
m	109	113	119	141	141	141	196	196	196
Øp	7/13	8/21	8/21	11/24	11/24	11/24	15/33	15/33	15/33

Couplers, with flexible cable entry, IP 44



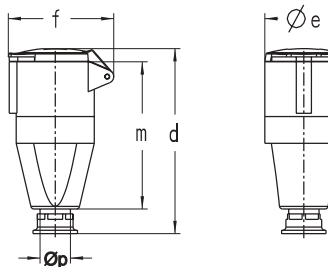
Amp.	16	32
Pole	5	5
d	167	196
Øe	65	72
f	85	98
m	119	141
Øp	8/21	11/24

Couplers, red special version, with flexible cable entry, IP 44



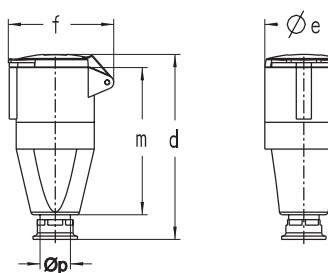
Amp.	16
Pole	3
d	121
Øe	51
f	68
m	108
Øp	8/15

Couplers, with inverted cable entry, IP 44



Amp.	16			32			63		
Pole	3	4	5	3	4	5	3	4	5
d	135	151	151	171	171	171	255	255	255
Øe	51	65	65	72	72	72	96	96	96
f	68	85	85	91	91	98	114	114	114
m	110	113	113	136	136	136	194	194	194
Øp	7.5-14.5	7.5-14.5	7.5-14.5	10-19.5	10-19.5	10-19.5	18-34.5	18-34.5	18-34.5

Couplers, with cable gland, IP 44



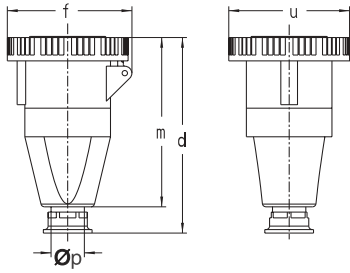
Amp.	16	32
Pole	5	5
d	151	171
Øe	65	72
f	85	98
m	113	136
Øp	10-19.5	18-24.5

Couplers, with cable gland for larger cable sizes, IP 44



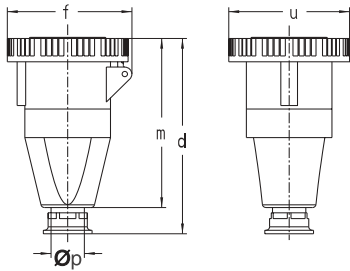
Ampère	Poles	110 V 50 a. 60 Hz	230 V 50 a. 60 Hz	400 V 50 a. 60 Hz	500 V 50 a. 60 Hz	> 50 - 500 V 100 - 300 Hz	> 50 - 500 V over 300 - 500 Hz		
2P+E		3pole 4pole 5pole 4h 4h 4h	3pole 4pole 5pole 6h 9h 9h	3pole 4pole 5pole 9h 6h 6h	3pole 4pole 5pole 7h 7h 7h	3pole 4pole 5pole 10h 10h 10h	3pole 4pole 5pole 2h 2h 2h		

Part numbers										
	16	5			310SL				10/60	304
	16	3	310 304	310 306	310 309				10/60	150
	16	4	310 404	310 409	310 406	310 407	310 410	310 402	10	192
	16	5	310 504	310 509	310				10/60	219
	32	3	330 304	330 306	330 309				10	280
	32	4	330 404	330 409	330 406	330 407	330 410	330 402	10	290
	32	5	330 504	330 509	330				10/60	311
	63	3	360 304	360 306	360 309				5	672
	63	4	360 404	360 409	360 406	360 407	360 410	360 402	5	719
	63	5	360 504	360 509	360				5	782
	16	5			313				10/60	221
	32	5			333				10/60	316
	16	3	315 304	315 306	315 309				10	140
	16	3	311 304	311 306	311 309				10	147
	16	4	311 404	311 409	311 406	311 407	311 410	311 402	10	197
	16	5	311 504	311 509	311				10	214
	32	3	331 304	331 306	331 309				10	265
	32	4	331 404	331 409	331406	331 407	331 410	331 402	10	278
	32	5	331 504	331 509	331				10	300
	63	3	361 304	361 306	361 309				5	656
	63	4	361 404	361 409	361 406	361 407	361 410	361 402	5	771
	63	5	361 504	361 509	361				5	787
	16	5			312				10	217
	32	5			332				10	317



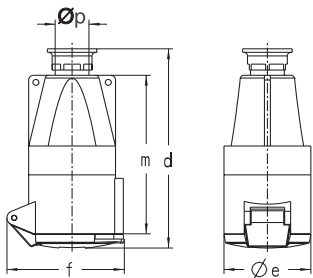
Amp.	16			32			63		
Pole	3	4	5	3	4	5	3	4	5
d	136	143	143	170	170	170	255	255	255
f	78	85	91	96	96	105	117	117	117
m	121	126	126	149	149	149	206	206	206
u	72	81	88	96	96	103	110	110	110
Øp	7.5-14.5	7.5-14.5	7.5-14.5	10-19.5	10-19.5	10-19.5	18-34.5	18-34.5	18-34.5

Couplers,
with cable gland,
IP 67 🇩🇪



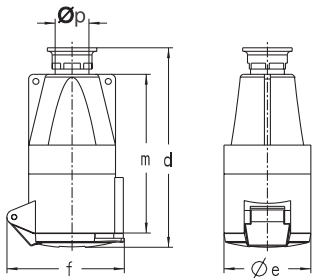
Amp.	125		
Pole	3	4	5
d	332	332	332
f	130	130	130
m	275	275	275
u	130	130	130
Øp	24-45	24-45	24-45

Couplers,
with cable gland,
with multi contact,
IP 67 🇩🇪



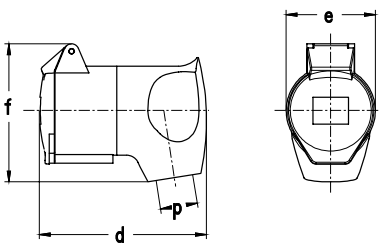
Amp.	16		32		
Pole	4	5	3	4	5
d	148	148	180	180	180
Øe	65	65	72	72	72
f	85	85	91	91	91
m	113	113	136	136	136
Øp	7.5-14.5	7.5-14.5	10-19.5	10-19.5	10-19.5

Suspension couplers,
with cable gland,
IP 44 🇩🇪



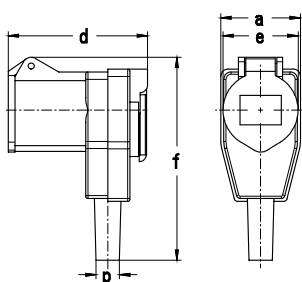
Amp.	16
Pole	5
d	148
Øe	65
f	85
m	113
Øp	10-19.5

Suspension couplers,
with cable gland for larger cable sizes
IP 44 🇩🇪



Amp.	16
Pole	3
d	95
e	50.3
f	80
p	8/13

Angled couplers,
IP 44 🇩🇪



Amp.	16
Pole	3
a	54
d	87
e	49.5
f	140
Øp	7/13

Angled couplers,
with Schuko socket on reverse side,
IP 44 🇩🇪



Ampère

Poles

110 V
50 a. 60 Hz
3pole 4pole 5pole
4h 4h 4h

230 V
50 a. 60 Hz
3pole 4pole 5pole
6h 9h 9h

400 V
50 a. 60 Hz
3pole 4pole 5pole
9h 6h 6h

500 V
50 a. 60 Hz
3pole 4pole 5pole
7h 7h 7h

> 50 - 500 V
100 -
300 Hz
3pole 4pole 5pole
10h 10h 10h

> 50 - 500 V
over 300 -
500 Hz
3pole 4pole 5pole
2h 2h 2h



Part numbers

<p>pic. 339</p>	16	3	319 304	319 306	319 309				10	172
	16	4	319 404	319 409	319 406	319 407	319 410	319 402	10	224
	16	5	319 504	319 509	319				10	252
	32	3	339 304	339 306	339 309				10	308
	32	4	339 404	339 409	339 406	339 407	339 410	339 402	10	721
	32	5	339 504	339 509	339				10	346
	63	3	369 304	369 306	369 309				5	758
	63	4	369 404	369 409	369 406	369 407	369 410	369 402	5	796
	63	5	369 504	369 509	369				5	844
<p>pic. 339</p>	125	3	379 304	379 306	379 309				2	1362
	125	4	379 404	379 409	379 406	379 407	379 410	379 402	2	1536
	125	5	379 504	379 509	379				2	1710
<p>pic. 334</p>	16	4	314 404	314 409	314 406	314 407	314 410	314 402	10	203
	16	5			314				10	221
	32	3	334 304	334 306	334 309				10	274
	32	4	334 404	334 409	334 406	334 407	334 410	334 402	10	287
32	5			334				10	307	
<p>pic. 315</p>	16	5			315				10	224
<p>pic. 316 306</p>	16	3	316 304	316 306	316 309				10	138
<p>pic. 317 306</p>	16	3		317 306					10	152