

More power. More convenience. More possibilities.
Innovations for SIMATIC S7-200



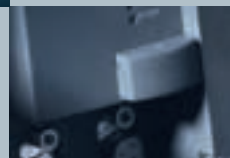
new

micro automation

SIMATIC S7-200



SIEMENS



Even more power in every detail – the innovations at a glance

The new CPUs

The new CPU 224 and the new CPU 226 have the following features:

- 40 % faster
- Up to 50 % more program memory
- Up to 60 % more data memory
- New memory card for data logging, recipe management, storing Micro/WIN projects, storing documentation in different formats
- PID autotune function
- two-color diagnosis/status LED
- Automatic summertime/wintertime switchover.

And if you're looking for even greater performance – the new Power CPU 224 XP is the answer:

- With two interfaces onboard for expanded communication options with non-Simatic devices. Specially designed for applications with networked controllers, if several components such as HMI, drives etc. are linked to the controller with data exchange via the RS-485 interface
- With two integrated analog inputs and one integrated analog output for specifying the speed of conveyor

- belts, setting the temperature set-point or setpoints for pressure regulation and much more
- With 50 % more program memory (compared to CPU 224)
- Plus an additional 25 % data memory (compared to CPU 224)
- Two pulse outputs with 100 KPPS each for connecting a wide array of different drives (TTL – 24VDC)
- High-speed counter 1 x 100 kHz (A/B) or 2 x 200 kHz (TTL – 24VDC) for connecting a wide array of different incremental position encoders.



NEW CPU 224



14/10 inputs/outputs (I/Os)
+ max. of 7 modules = 168 I/Os
8/12 KB program memory
8 KB data memory

NEW CPU 224 XP



14/10 inputs/outputs (I/Os)
+ max. of 7 modules = 168 I/Os
12/16 KB program memory
10 KB data memory

NEW CPU 226



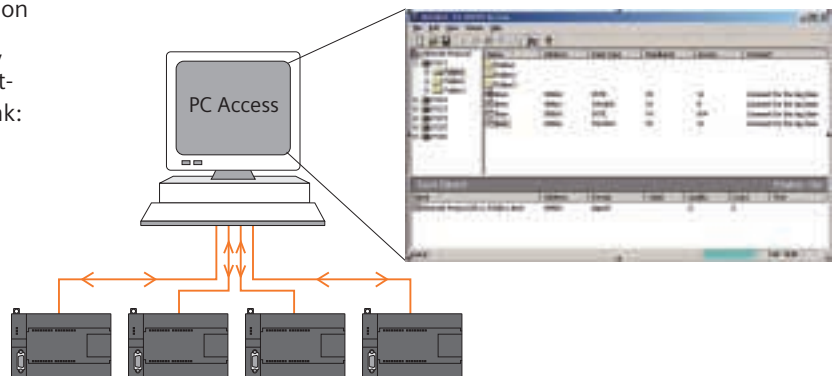
24/16 inputs/outputs (I/Os)
+ max. of 7 modules = 248 I/Os
16/24 KB program memory
10 KB data memory

New connection: PC Access

A simply perfect basis for exchanging data between the S7-200 and your PC. PC Access serves as the OPC server for S7-200 – that means:

- Use MS Excel to read/write S7-200 data
- OPC client for e.g. ProToolPro, WinCC flexible RT, WinCC, WonderWare etc.

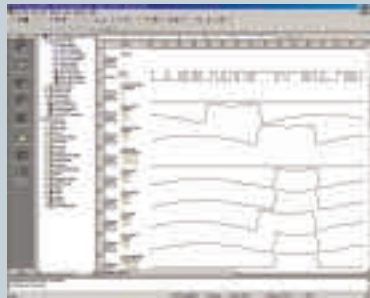
- Interface for visualization
- Max. of 8 connections, regardless of the selected communications link:
- PPI (Smart Cable)
- Modem (EM241)
- Ethernet/IT CP.



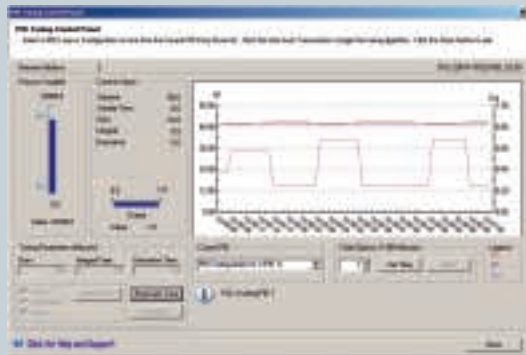
New: STEP 7 Micro/WIN 4.0

The new software for SIMATIC S7-200 STEP 7 Micro/WIN 4.0 is even easier to use. Many new functions such as trend charts and new, improved wizards for

- PID controllers
- PID autotune control panel
- PTO (pulse outputs)
- Data logging
- Recipe management.



Trend charts



PID autotune control panel

Other new features include:

- Segmented data memory
- Improved handling of program architecture and command architecture
- Diagnostic functions such as user-specific LED, fault history, runtime edit with online download.

For Win2000 or Windows XP operating systems or higher

New options for HMI

TD 200 C

- Customized layouts for user interface
- Free choice of colors & shape of keys and surface
- Up to 20 freely configurable keys
- Integration of your own company logo
- Integration of international symbols.



TD 200 C

OP 73micro

- Operator panel with fully graphical 3" display
- Network-capable (PPI, MPI)
- Signaling system with freely definable signal classes
- Five online languages incl. Asian and Cyrillic.



OP 73micro

TP 170micro

- Touch panel with fully graphical 5.7" display
- Network-capable (PPI, MPI)
- Signaling system with freely definable signal classes
- Five online languages incl. Asian and Cyrillic
- Easy to program with WinCC flexible micro.



TP 170micro

Memory Cartridge

Whether you're dealing with project documents, recipe handling or data logging: the memory modules are available with 64 KB or 256 KB.

Project documentation

- Bitmap files, PDF files, DOC files
- Complete MW projects can be easily transferred to the memory card with the S7-200 Explorer – that means that the complete, up-to-date user documentation is always available on-site, accessible even without MW.

Recipe handling

- Definition and download of recipes: production data, machine parameters etc.
- Better use of memory thanks to data memory storage in the CPU with only one recipe: online updating and adaptation.

Data logging

- Dynamic storage, e.g. for performance or statistical data as well as fault messages
- Optional time stamp
- Log file transferable to your PC via Explorer.



Ordering data

The new products:

Product	MLFB	Avail. from
224 CPU DC/DC/DC	6ES7 214 1AD23 0XB0	08/2004
224 CPU AC/DC/Relay	6ES7 214 1BD23 0XB0	08/2004
224 XP CPU DC/DC/DC	6ES7 214 2AD23 0XB0	08/2004
224 XP CPU AC/DC/Relay	6ES7 214 2BD23 0XB0	08/2004
226 CPU DC/DC/DC	6ES7 216 2AD23 0XB0	08/2004
226 CPU AC/DC/Relay	6ES7 216 2BD23 0XB0	08/2004
Data Logger Cartridge, 256 KB	6ES7 291 8GH23 0XA0	08/2004
Data Logger Cartridge, 64 KB	6ES7 291 8GF23 0XA0	08/2004
Text Display TD 200 C (custom faceplate)	6ES7-272-1AA10-0YA0	08/2004
Blank Faceplate Overlays (for TD 200 C)	6ES7-272-1AF00-7AA0	08/2004
WinCC flexible Micro for TP 170micro	6AV6610-0AA01-0AA0	06/2004
Touch Panel TP 170micro Operating Manual, German	6AV6691-1DB01-0AA0	06/2004
Touch Panel TP 170micro	6AV6640-0CA01-0AX0	06/2004
Starter Package TP 170micro (Touch Panel, Engineering Software and Documentation CD)	6AV6650-0CA01-0AA0	06/2004
Operator Panel OP 73micro	6AV6640-0BA11-0AX0	08/2004
STEP 7-Micro/WIN V4.0 (single license)	6ES7 810 2CC03 0YX0	08/2004
STEP 7-Micro/WIN V4.0 (upgrade license)	6ES7 810 2CC03 0YX3	08/2004
S7-200 PC Access V1.0 (OPC Server) (single license)	6ES7 840 2CC01 0YX0	08/2004
S7-200 PC Access V1.0 (OPC Server) (multi-copy license – 15 licenses)	6ES7 840 2CC01 0YX1	08/2004

Siemens AG

Automation and Drives
Industrial Automation Systems
P.O. Box 48 48, D-90327 Nuremberg, Germany

www.siemens.com/s7-200

The information provided in this brochure contains merely general descriptions or characteristics of performance which in case of actual use do not always apply as described or which may change as a result of further development of the products. An obligation to provide the respective characteristics shall only exist if expressly agreed in the terms of contract.