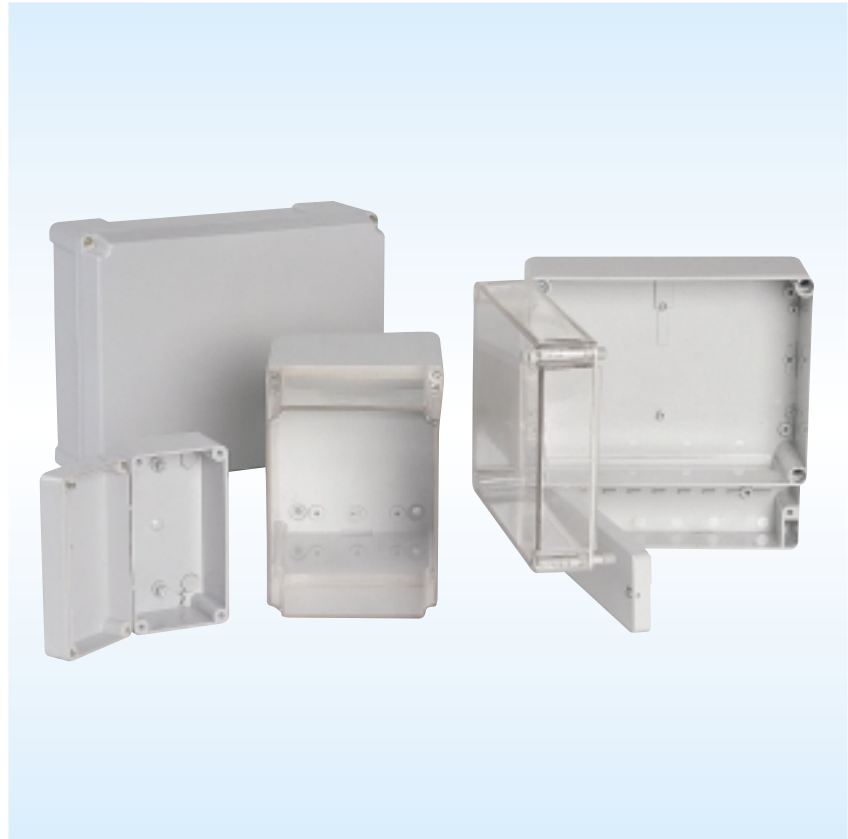
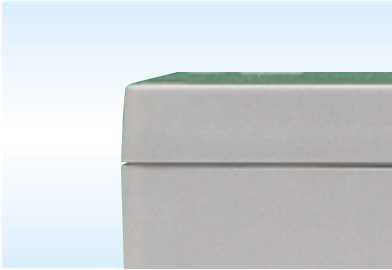


Insulating boxes comprising a base and cover:

- **CI...** models manufactured in PVC, resistant to temperatures up to 70°C,
- **CIP... CIE...** models manufactured in polycarbonate, resistant to temperatures up to 125°C,
- polished surfaces. Colour: grey to RAL -7035,
- fire-retardant, double insulation,
- degree of impact protection:
 - PVC IK5,
 - IK7 polycarbonate.
- seal included with all models,
- **CI...BI** boxes have internal hinges,
- **CI...T** have a transparent polycarbonate cover,
- **CI...A, B, C** boxes for different cover depths,
- internal and external hinges available as accessories,
- quick fit stainless steel or insulating (depending on model) cover-base connecting screws,
- metal mounting plates available as accessories,
- direct wall fixing or fixing via wall fixing feet,
- sealed at two points,
- degree of protection:
 - IP66.
 - IP55 in the case of PVC **CI** boxes larger than **CI2722**.
 - IP54 for hinged boxes.



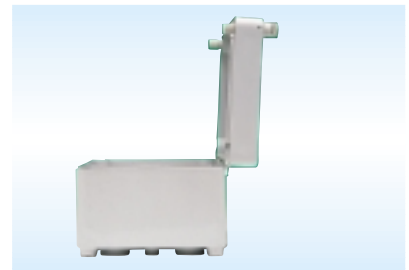
external dimensions height width depth			Product Reference PVC				Product Reference POLYCARBONATE							
			opaque		transparent		opaque lid	transparent lid	hinges	with connection box			screw type	mounting plate
			lid	internal hinges	lid	internal hinges				opaque lid	transparent lid	internal hinges		
105	105	66	CI1010	-	-	-	CIP1010T	-	-	-	-	Metal	-	
105	105	140	CI1010A	-	-	-	CIP1010A	-	-	-	-	Metal	-	
110	75	58	CI117	-	-	-	CIP117T	-	-	-	-	Metal	-	
105	75	89	CI117A	-	-	-	-	-	-	-	-	Metal	-	
135	74	72	CI137	-	-	-	CIP137	CIP137T	-	-	-	Metal	-	
135	74	105	CI137A	-	-	-	CIP137A	-	-	-	-	Metal	-	
170	105	82	CI1710	CI1710BI	-	-	CIP1710	CIP1710T	-	-	-	Polyamide	PMCI1710	
170	105	112	CI1710A	-	-	-	CIP1710A	-	-	-	-	Polyamide	PMCI1710	
170	135	85	CI1713	CI1713BI	CI1713T	CI1713BIT	CIP1713	CIP1713T	-	-	-	Polyamide	PMCI1713	
170	135	107	CI1713B	-	-	-	CIP1713B	CIP1713BT	-	-	-	Polyamide	PMCI1713	
170	135	145	CI1713A	-	-	-	CIP1713A	-	-	-	-	Polyamide	PMCI1713	
170	135	147	-	-	-	-	-	-	-	-	-	Metal	PMCI1713	
170	135	175	-	-	-	-	CIP1713D	CIP1713DT	-	-	-	Metal	PMCI1713	
170	135	205	-	-	-	-	-	-	-	-	-	Metal	PMCI1713	
170	135	239	-	-	-	-	-	CIP1713FT	-	-	-	Metal	PMCI1713	
220	168	85	CI2216B	-	-	-	CIP2216B	CIP2216BT	-	-	-	Polyamide	PMCI2216	
220	168	106	CI2216	CI2216BI	CI2216T	CI2216BIT	CIP2216	CIP2216T	-	-	-	Polyamide	PMCI2216	
220	168	142	CI2216A	-	-	-	CIP2216A	CIP2216AT	-	-	-	Polyamide	PMCI2216	
230	220	112	-	-	-	-	-	-	-	CI2322	-	-	Polyamide	-
230	220	126	-	-	-	-	-	-	-	CI2322A	CI2322AT	CI2322ABIT	Polyamide	-
245	135	80	-	-	-	-	-	-	-	CI2413B	-	-	Metal	PMCI1713
270	220	105	CI2722	CI2722BI	-	-	CIP2722	-	-	-	-	-	Polyamide	PMCI2722
270	220	125	CI2722A	-	-	-	CIP2722A	CIP2722AT	-	-	-	-	Polyamide	PMCI2722
270	220	167	-	-	-	-	CIP2722B	CIP2722BT	-	-	-	-	Polyamide	PMCI2722
313	253	115	CI3125	CI3125BI	-	-	CIP3125	CIP3125T	CIP3125BIT	-	-	-	Polyamide	PMCI3125
313	253	165	CI3125A	-	-	-	-	-	-	-	-	-	Polyamide	PMCI3125
350	280	105	CI3528	CI3528BI	-	-	CIP3528	CIP3528T	-	-	-	-	Polyamide	PMCI3528
350	280	164	CI3528A	-	-	-	CIP3528A	CIP3528AT	-	-	-	-	Polyamide	PMCI3528



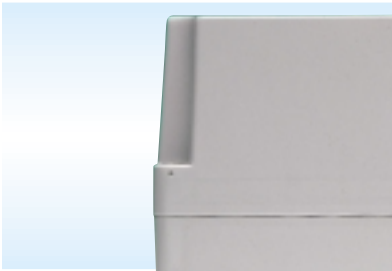
Opaque low lid.
"BASIC" model IP-55.



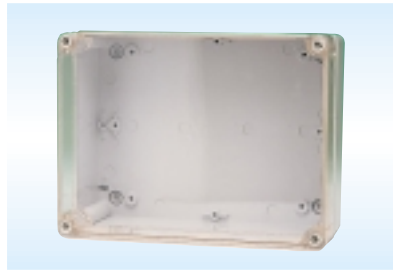
With Terminal Box.



Opaque low lid with hinges.
"BI" models IP-54.



Opaque high lid.
"A" models IP-55.



Transparent low lid.
"T" models IP-55.

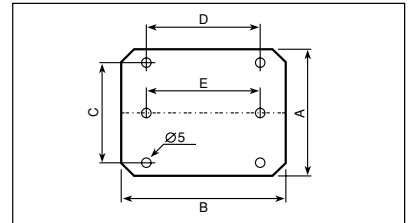


Earthing product reference: **TTCI** for mounting on bases of boxes **CI-CIP-CIE**.

Metal mounting plates

To be fitted directly into the boxes by means of self-tapping screws included in the standard supply.
Made of zinc-coated sheet steel 1,5 mm. thick.

product reference	A	B	C	D	E
PMCI 1710	95	156	-	-	130
PMCI 1713	120	156	65	130	-
PMCI 2216	156	205	130	150	-
PMCI 2722	208	258	161	221	-
PMCI 3125	235	295	156	216	-
PMCI 3528	250	320	210	250	-



Internal hinges

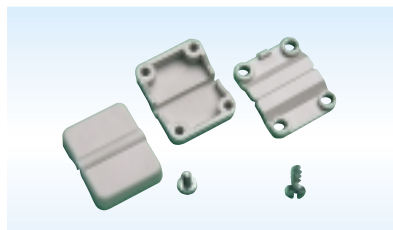
Product reference: **BICI** to be fitted to boxes **CI 1710 - 1713 - 2216**.



Product reference **BICI 2722** to be fitted to boxes **CI 2722 - 3125**.

External hinges

Product reference: **BECI** to be fitted to boxes **CI 1710 - 1713 - 2216**. Product reference: **BECI** to be fitted to boxes **CI 3528**.



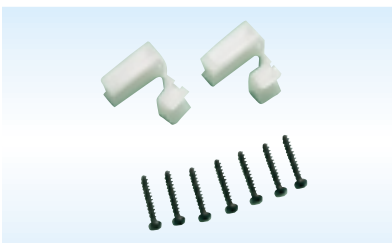
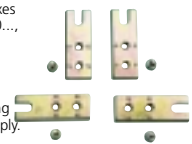
Wall fixing brackets

Prepared to be fitted to any model.
Made of Zn - Cr coated steel. (optional)

Product reference: **PFCI** for boxes **CIP1713C, CIP1713D, CIP1713E, CIP1713F, CIP1713CT, CIP1713DT, CIP1713FT**.

Product reference: **FMCI** for boxes **CI...1010..., CI...137..., CI...1710..., CI...1713... different from PFCI, CI...2216..., CI...2722..., CI...3125..., CI...3528...**

Product reference: **CIE2322...** and **CIE 2413...** One central fixing bracket included in standard supply.



Maternal fixing screw

Screws provided for fixing installation material (plates, rails) on bases of boxes **CI-CIP-CIE**.
Zinc coated self-tapping screws of 4,1 x 10.
Product Reference **TOR/CI**.

Sealing caps



Product Reference: **PRC/CI** for boxes **CI1010A, CIP1010A, CI117A, CI137A, CIP137A, CIP17130, CIP1713DT, CIP1713E, CIP1713F, CIP1713FT**.

Product Reference: **PRC/CI** for boxes **CI117, CIP117, CI117T, CI137, CIP137, CI137T, CIP1713C, CIP1713CT**.