

Single & Twin Lightpack (LPV)

Supplied Complete with Lamp



IP20



An attractively designed single or twin lamp batten luminaire specifically for the T12 (38mm) lamp. Supplied complete with lamp(s) in an attractive point-of-sale carton.



APPLICATION

Schools, offices, kitchens, workshops etc.

SPECIFICATION

- Manufactured from mild steel.
- Resilient white finish.
- Complies with EN60598.
- Polycarbonate lampholders.
- Standard Voltage 240V.
- Standard lamp colour - White.
- Stand offs for F Mark.

VARIATIONS

- Electronic dimming.
- Various bespoke requirements to order.

FULL RANGE OF LIGHTPACK ATTACHMENTS

- Diffusers.
- Reflectors.

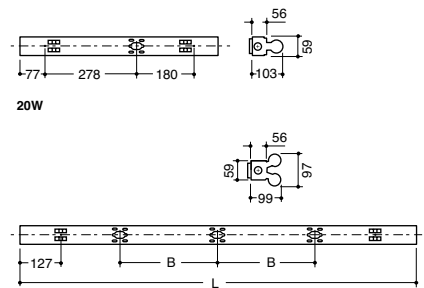
For further details please see pages 1.5 to 1.10.

SPARE PARTS

Please see page 11.2 to 11.3 for ordering references.

EXPORT

Packed excluding lamps and two pieces per carton.



20W
40W, 65W, 70W, 100W and 125W

STANDARD	ORDERING REFERENCE	LAMP DETAIL	LENGTH "L" (MM)	FIXING CENTRES "B"	CARTON VOLUME (M ³)	PACKING WEIGHT (KG)	ORDERING DATA
	LPF20	1 X 20W	612	-	0.004	1.58	Fuse Terminal Block - suffix /FTB
	LPF40	1 X 40W	1221	300	0.008	2.38	Excluding Lamp - suffix B
	LPF65	1 X 65W	1521	300	0.010	3.29	110 Volt - suffix .110V Max 58W
	LP20	1 X 20W	612	-	0.004	1.60	220 Volt - suffix .220V
	LP40	1 X 40W	1221	300	0.008	2.36	Export - suffix X, Please specify voltage & frequency.
	LP65	1 X 65W	1521	300	0.010	3.74	Dimming (Cathode Heater) - suffix D (T12/38mm lamps only)
	LP75	1 X 75W	1784	300	0.011	3.99	
	LP100	1 X 100W	2394	600	0.015	4.85	
	LPFV220	2 X 20W	612	-	0.006	1.80	
	LPV240	2 X 40W	1221	300	0.012	3.39	
	LPV265	2 X 65W	1521	300	0.015	4.82	
	LPV275	2 X 75W	1784	300	0.017	5.04	
	LPV2100	2 X 100W	2395	600	0.023	6.45	

Please check with Area Sales Office to ensure required variation available.